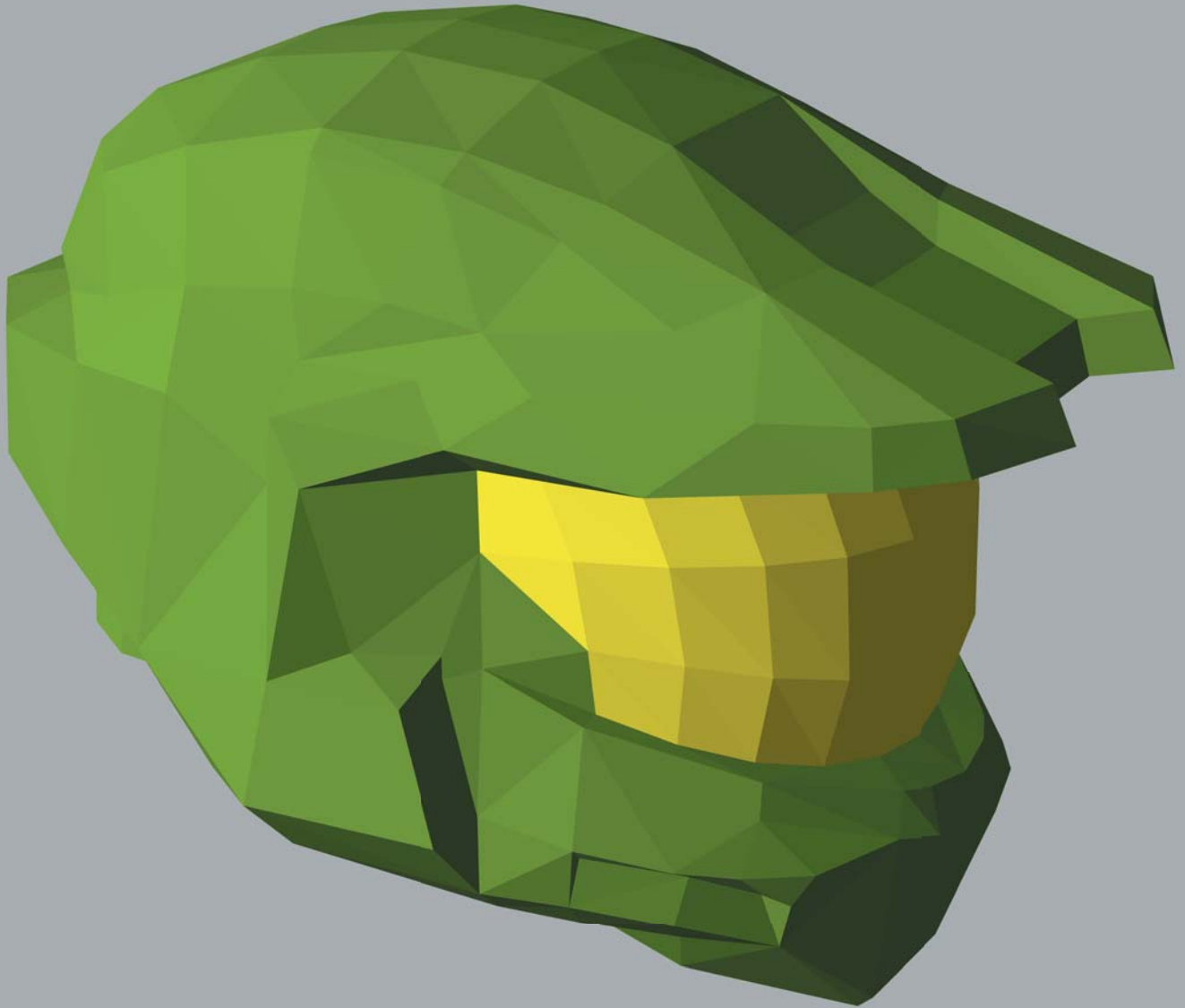


gamescanner.org

proudly presents

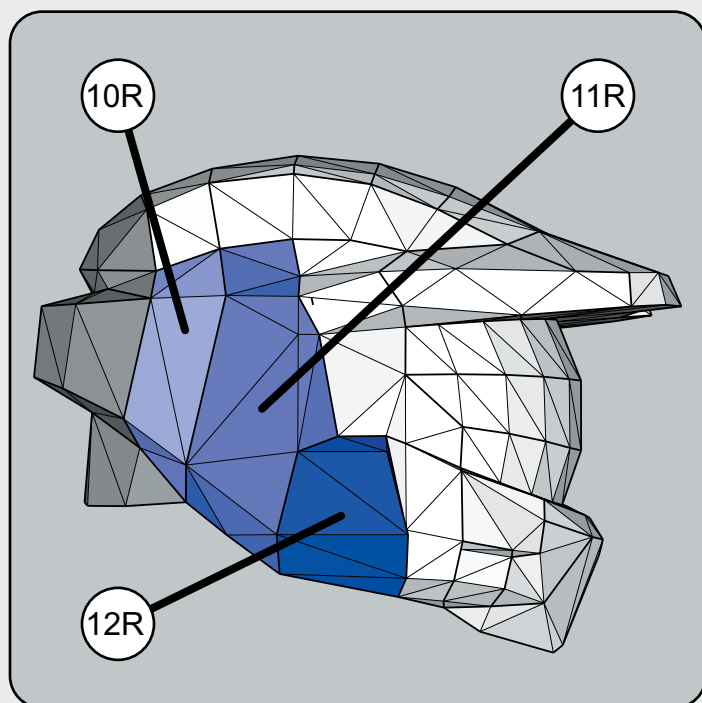
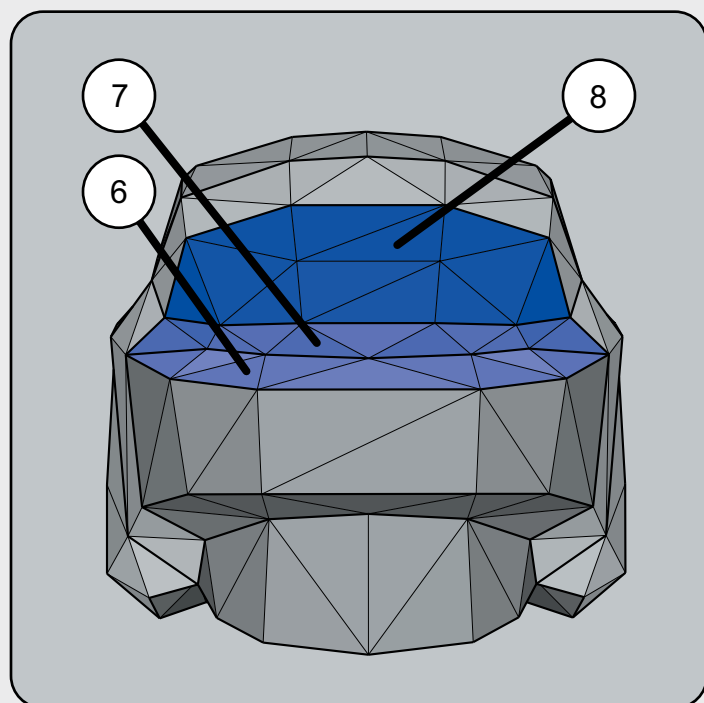
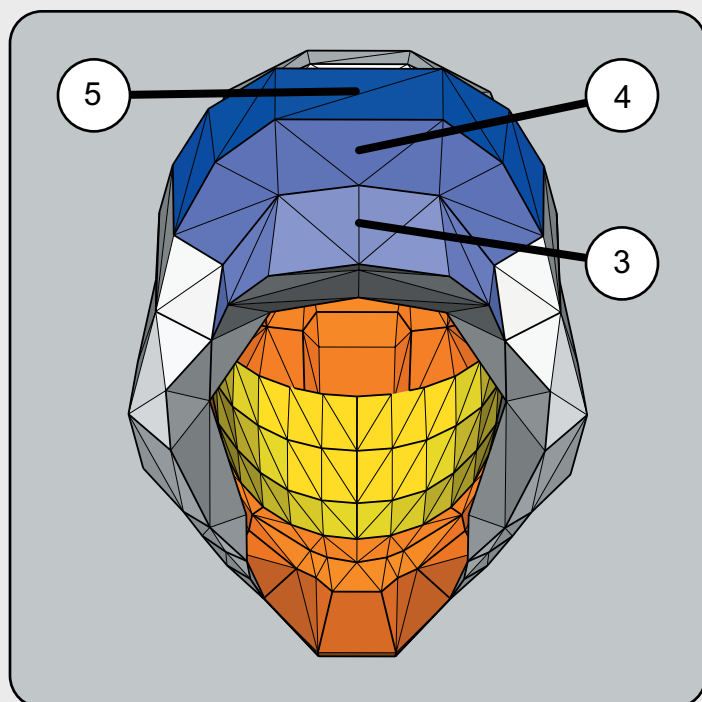
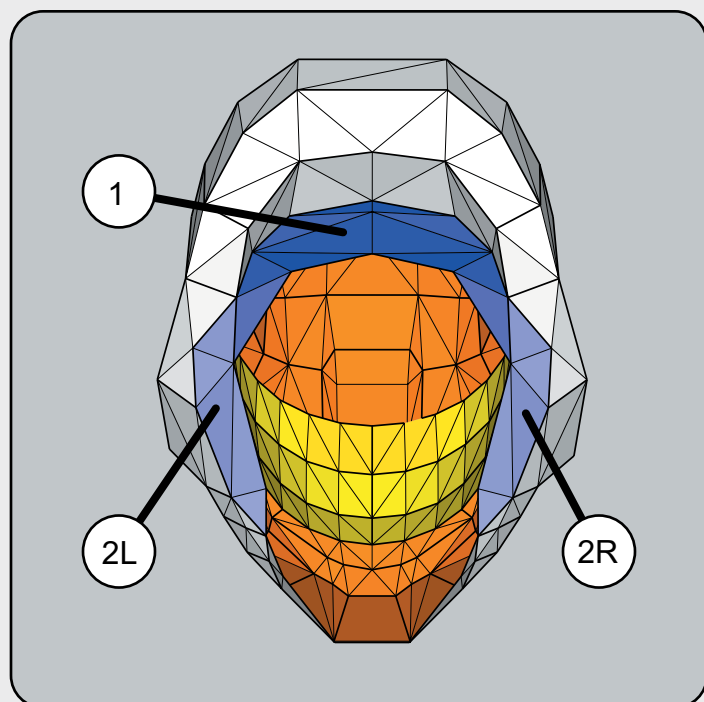


HALO UNIVERSE

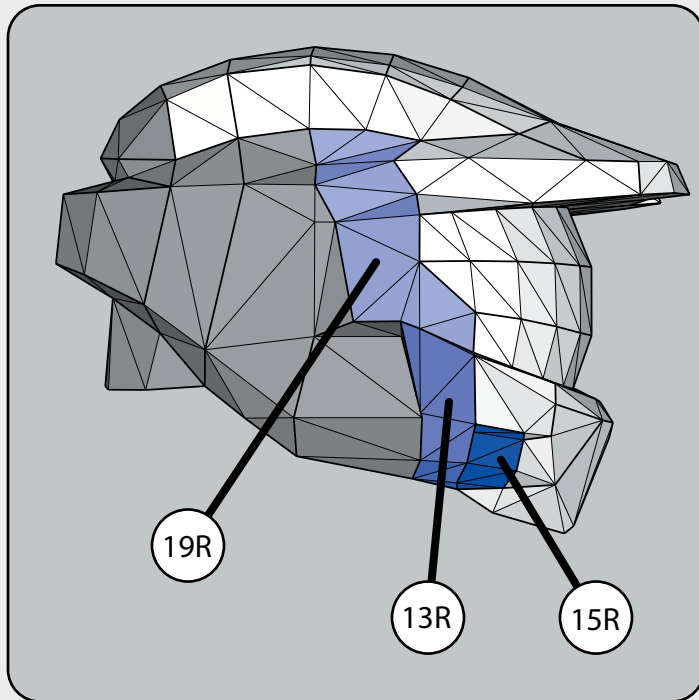
MASTER CHIEF HELMET

PAPERCRAFT MODEL KIT

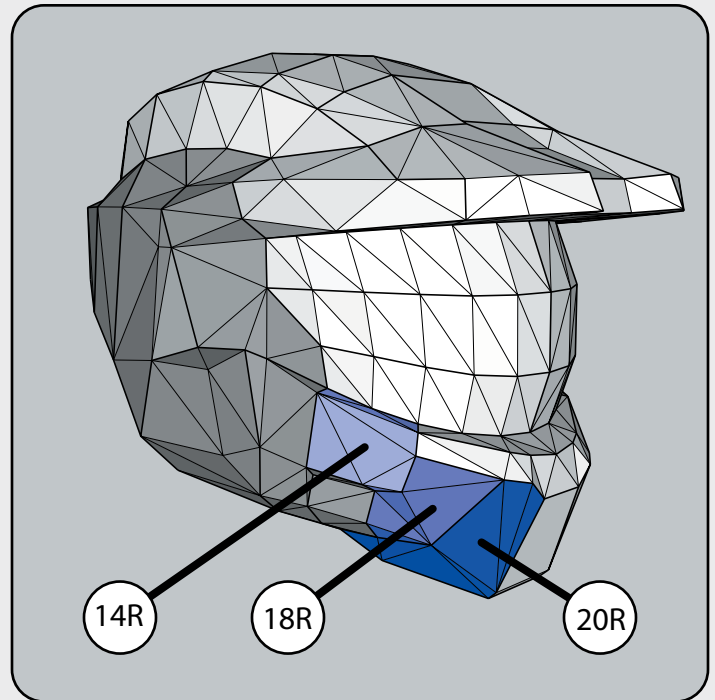
DESIGNED BY WWW.GAMESCANNER.ORG 2007



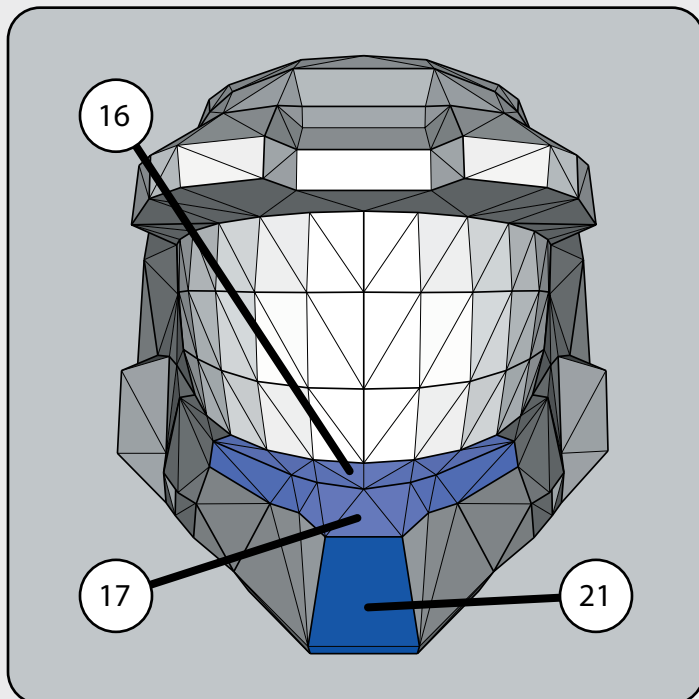
4 Skip part #9. Glue parts 10R, 11R & 12R.
Repeat same process on the left side of the helmet using parts 10L, 11L & 12L.



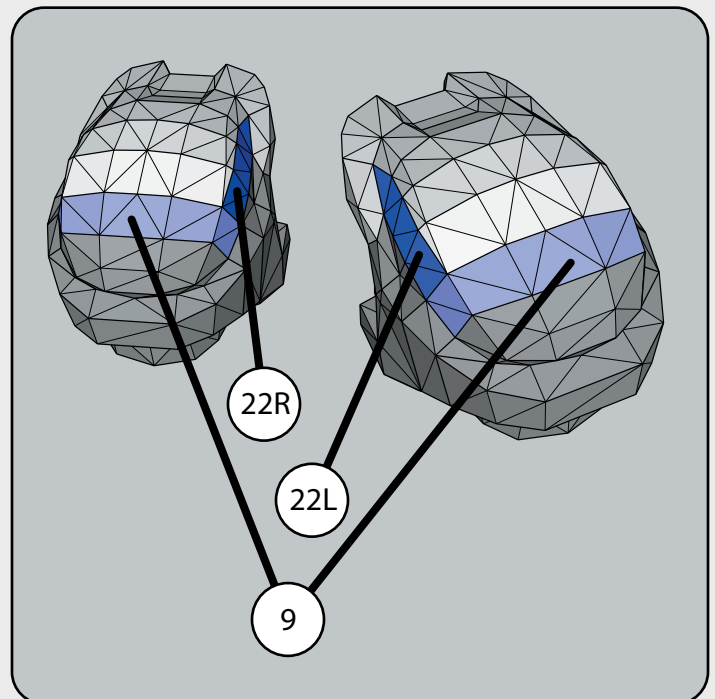
- 5 As before, using parts 13L, 15L & 19L glue them on the left side of helmet.



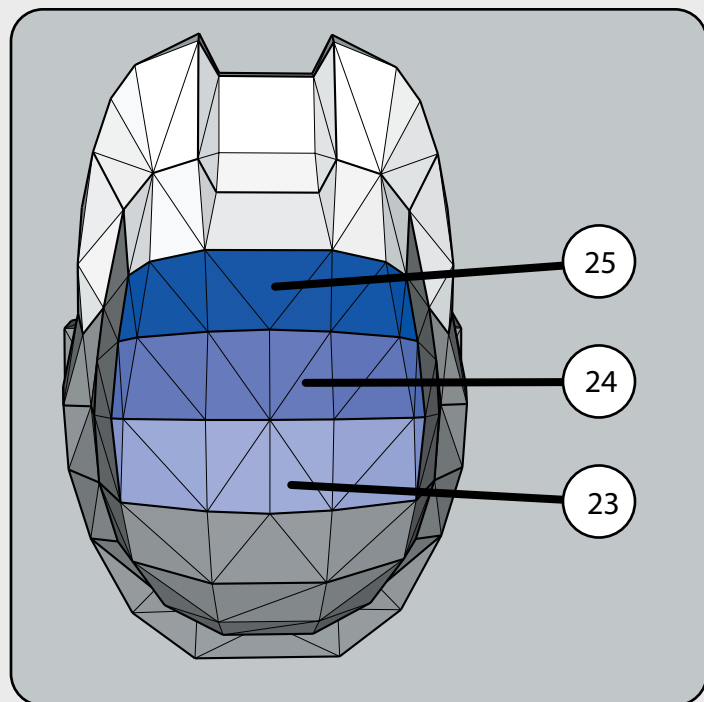
- 6 Same process goes for parts 14L, 18L & 20L.



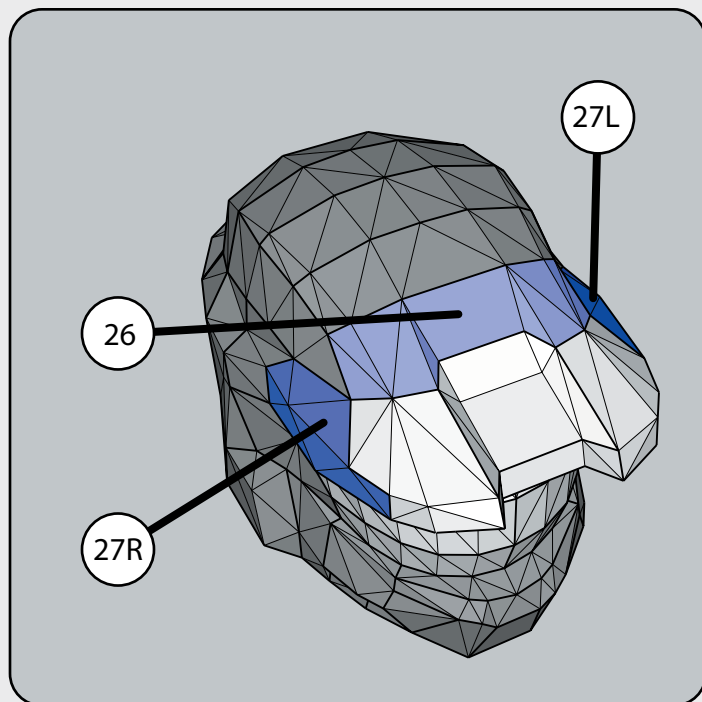
- 7 After attaching parts # 16, 17 & 21 the jaw of the helmet completes its bottom part.



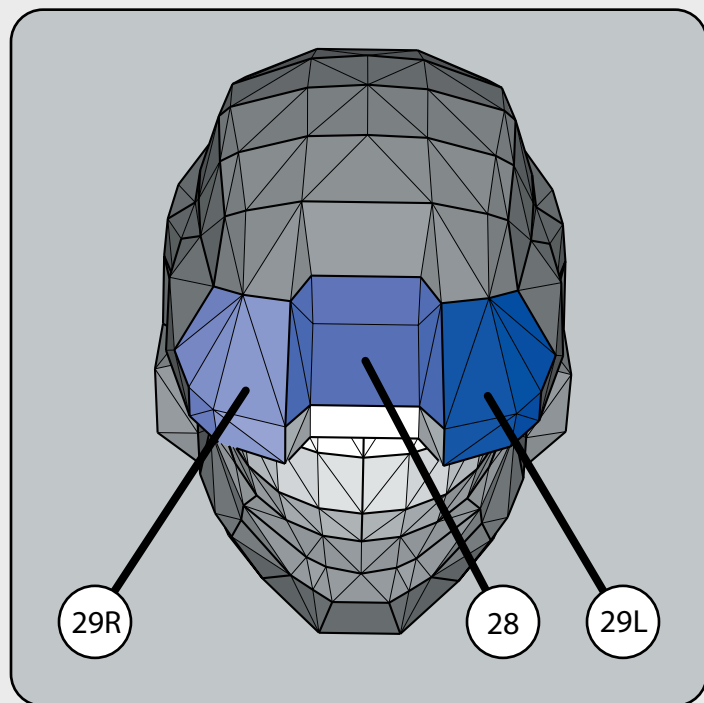
- 8



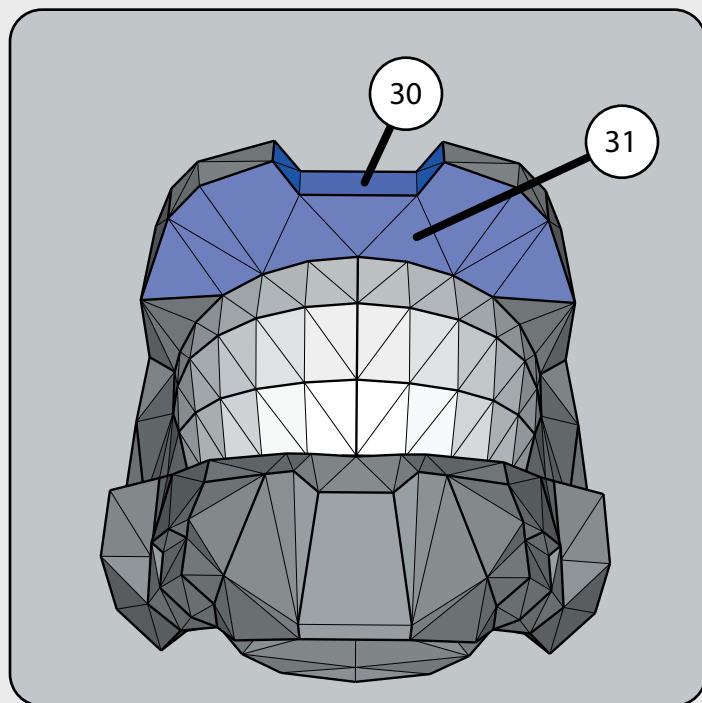
9



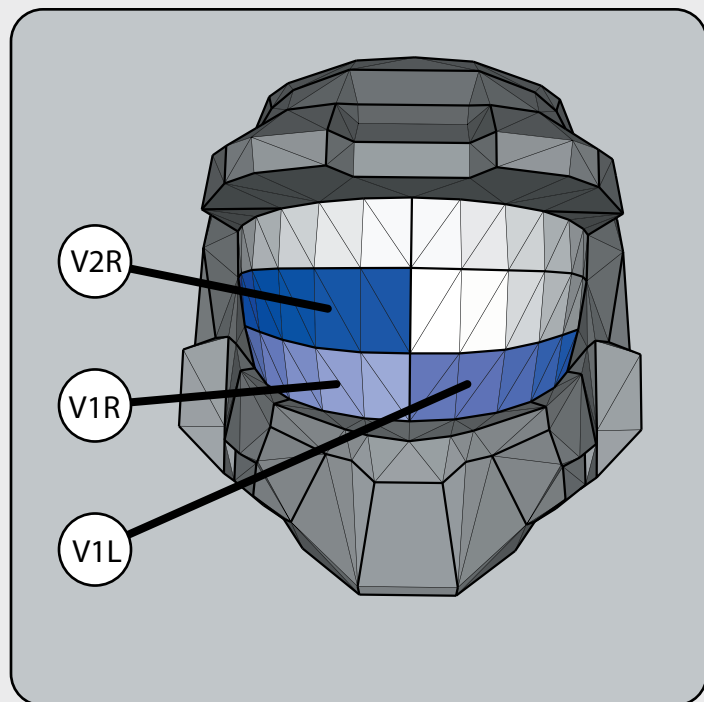
10



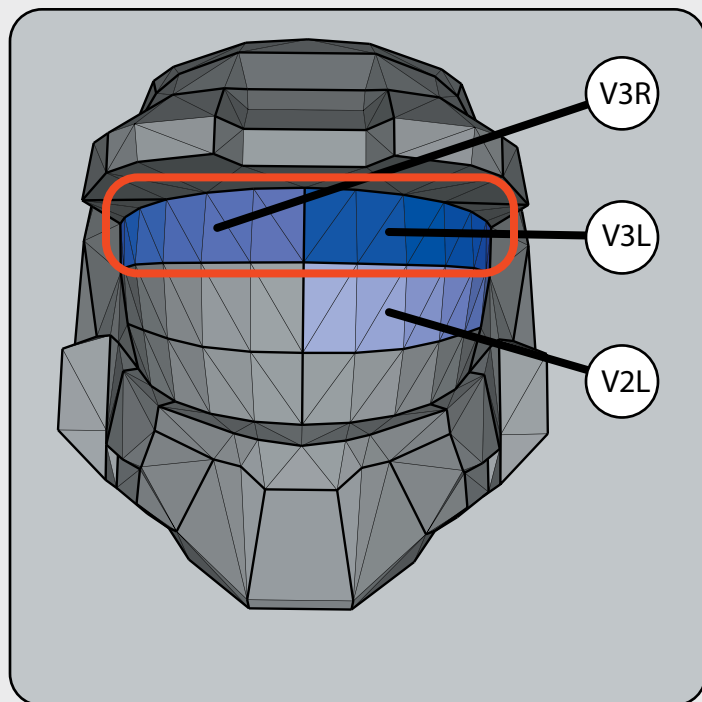
11



12

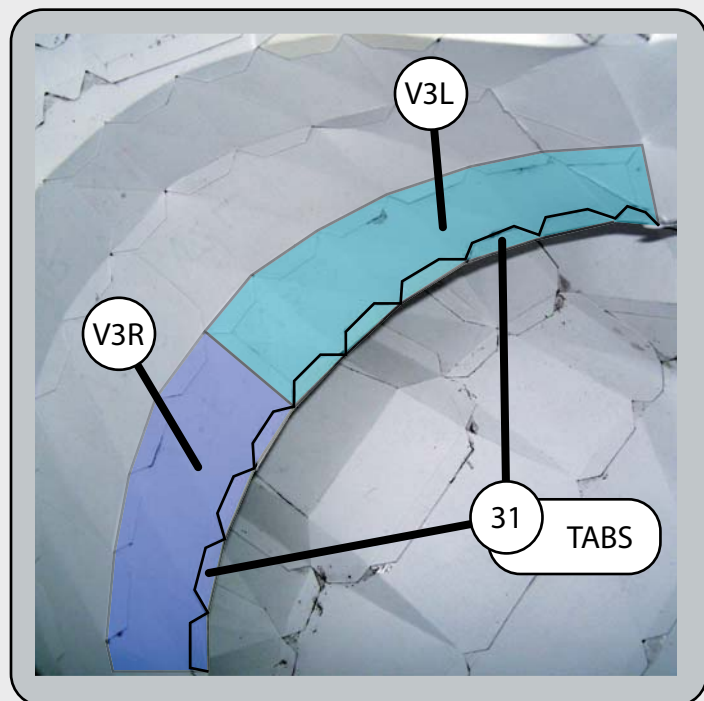


13



14

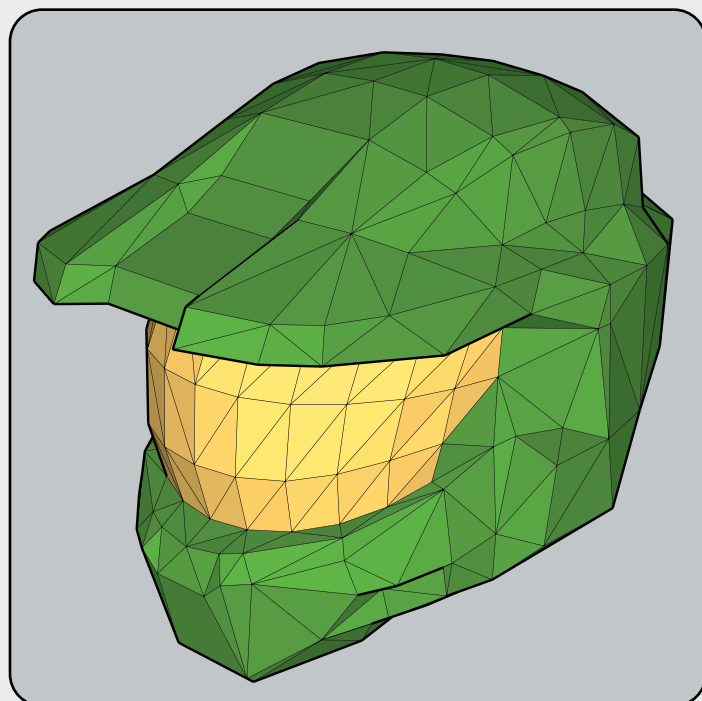
NOTE! Glue parts V3R & V3L only to bottom parts of the visor V2R & V2L



15

Turn helmet upside down. Now, glue tabs that belong to part #31 to the top parts of the visor with corresponding numbers V3R & V3L. This photo shows that exactly. Inside of the helmet.

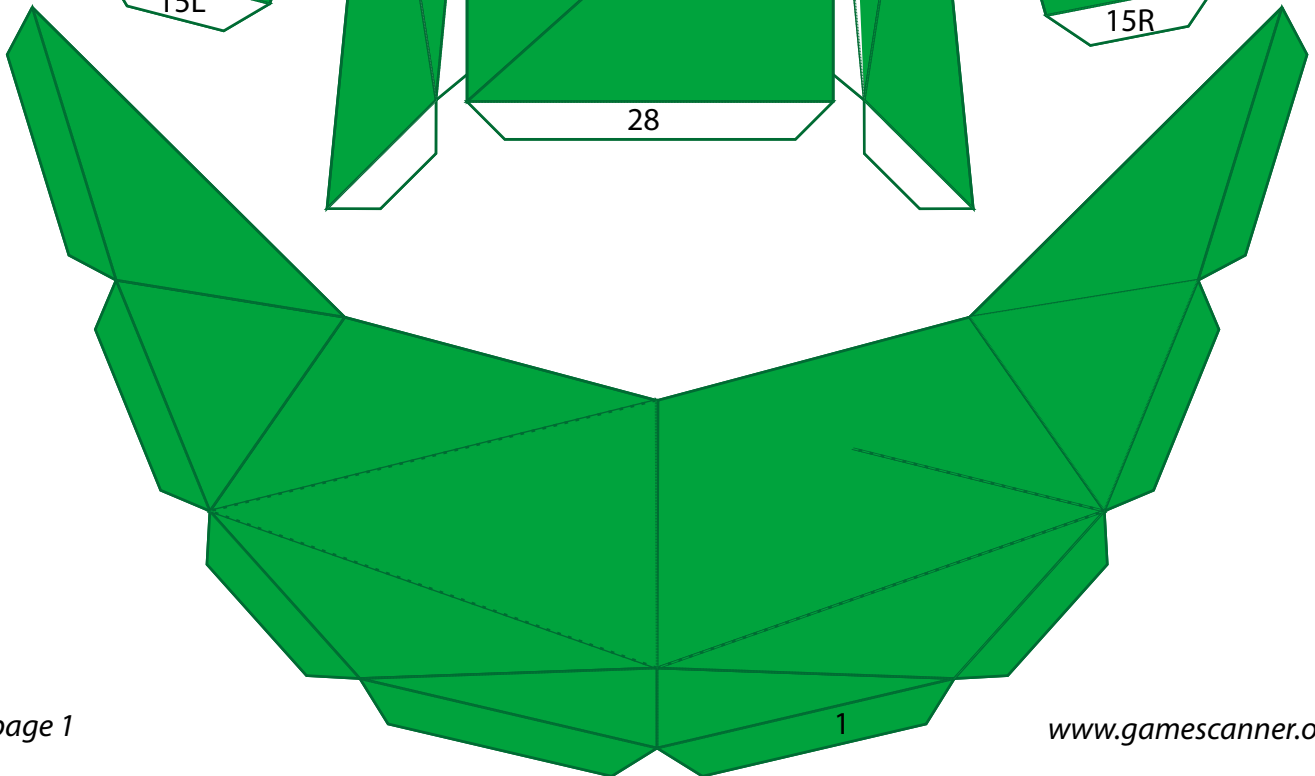
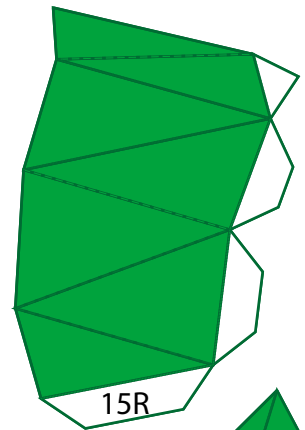
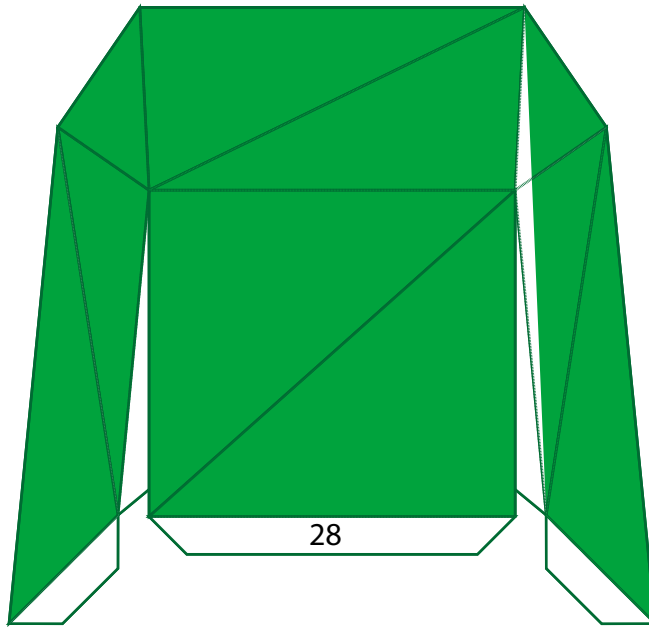
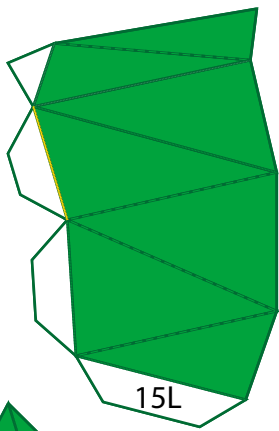
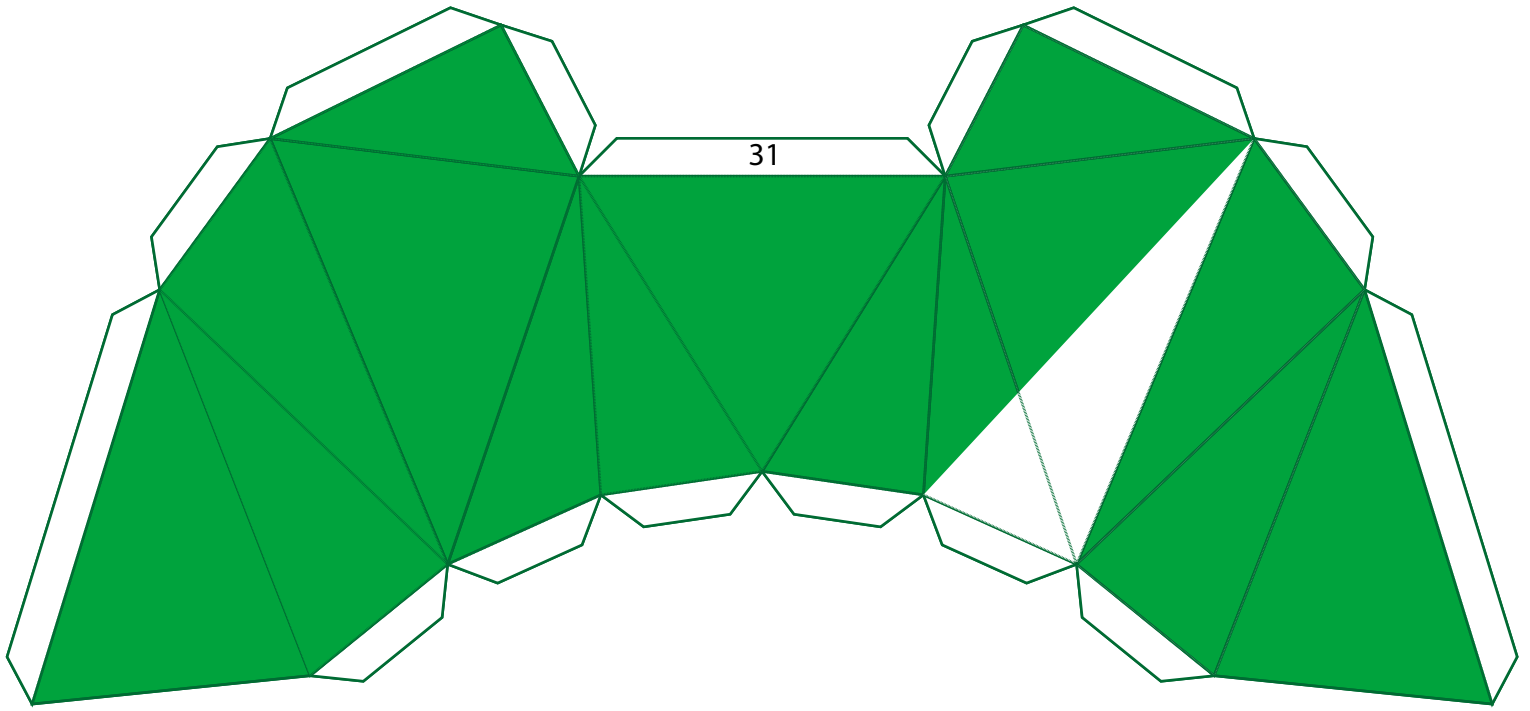
www.gamescanner.org



16

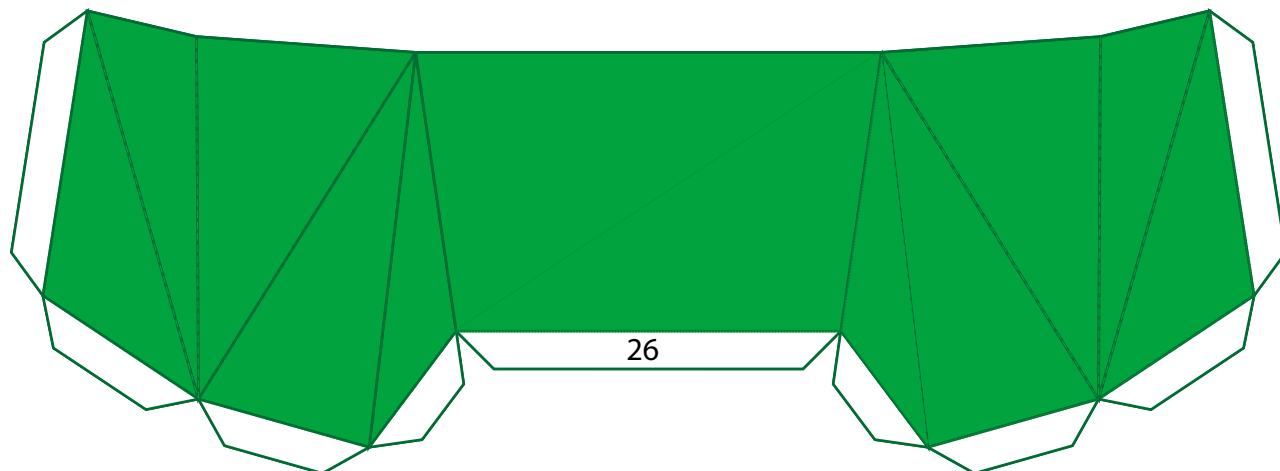
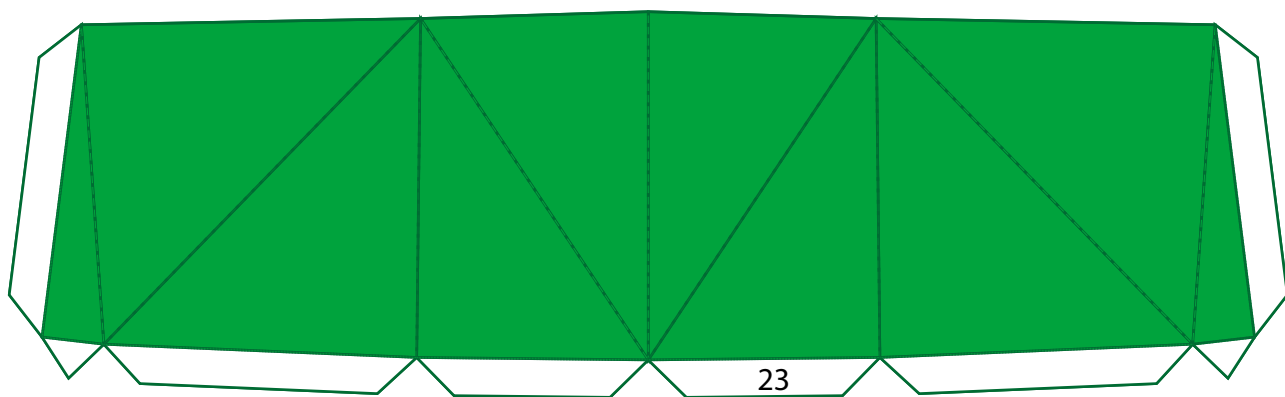
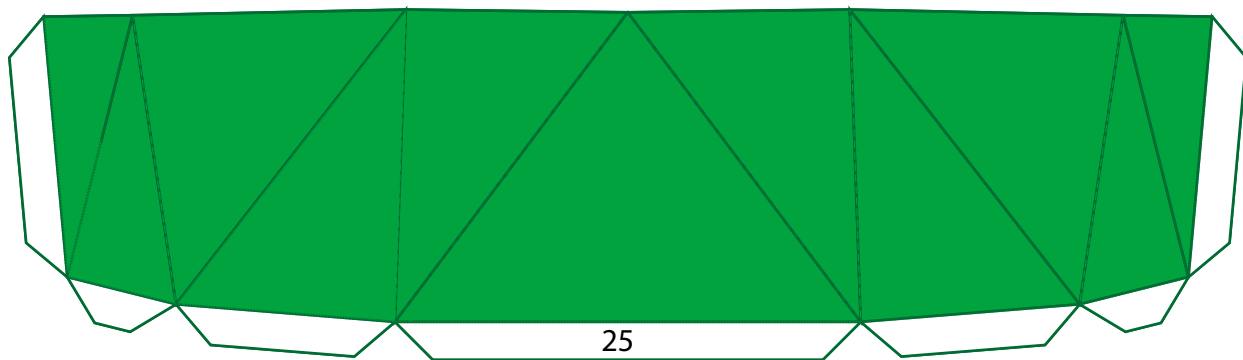
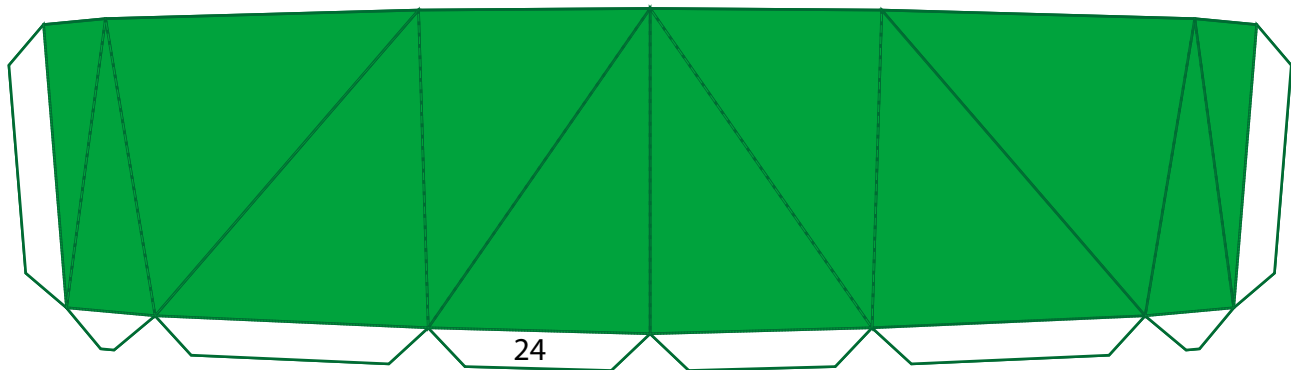
Now you are done! I hope you enjoyed it!
Visit my website www.GameScanner.org
or email me a photo of the finished helmet & I just might post it!

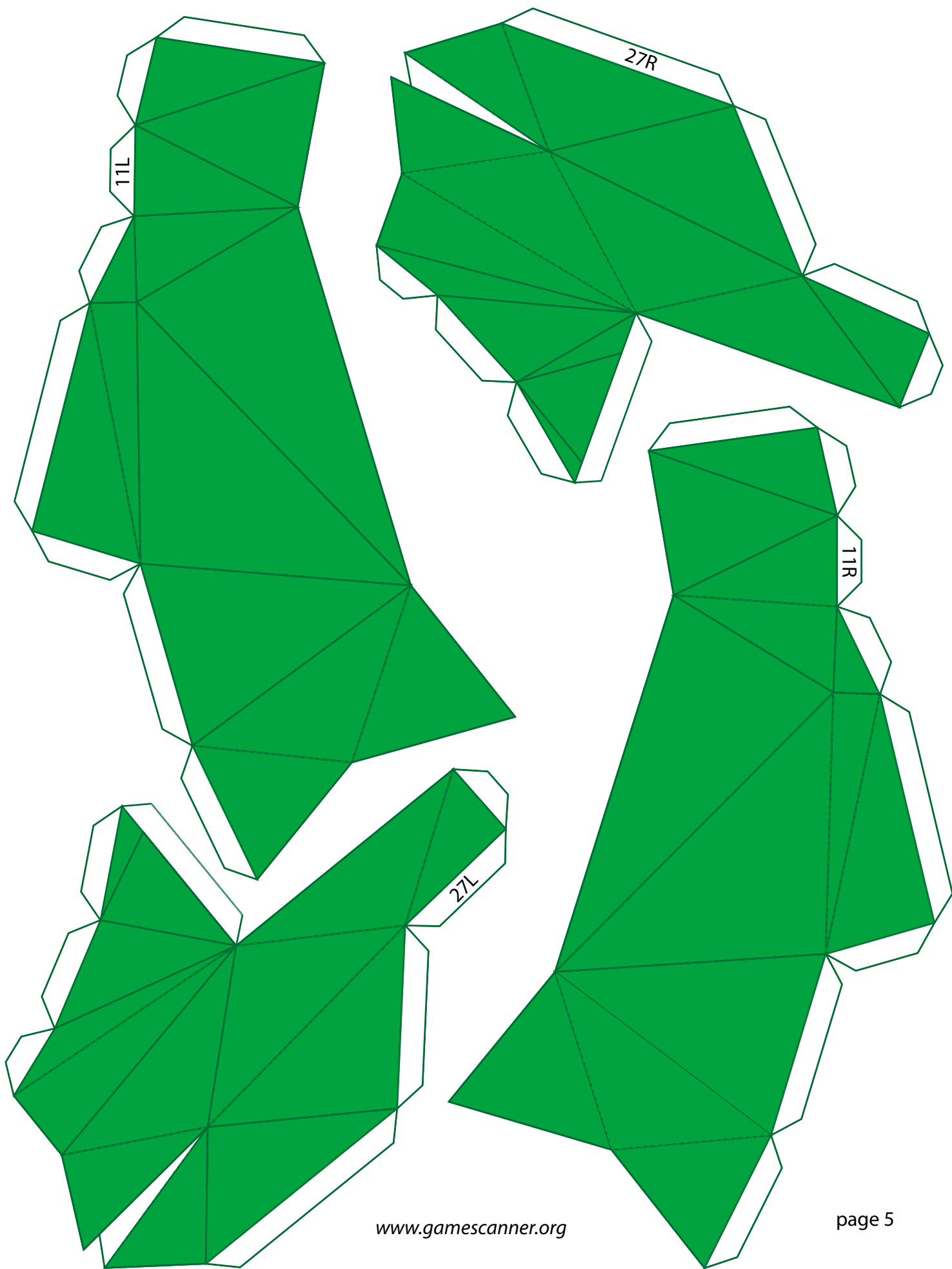
Thank you very much!
assembly page 4

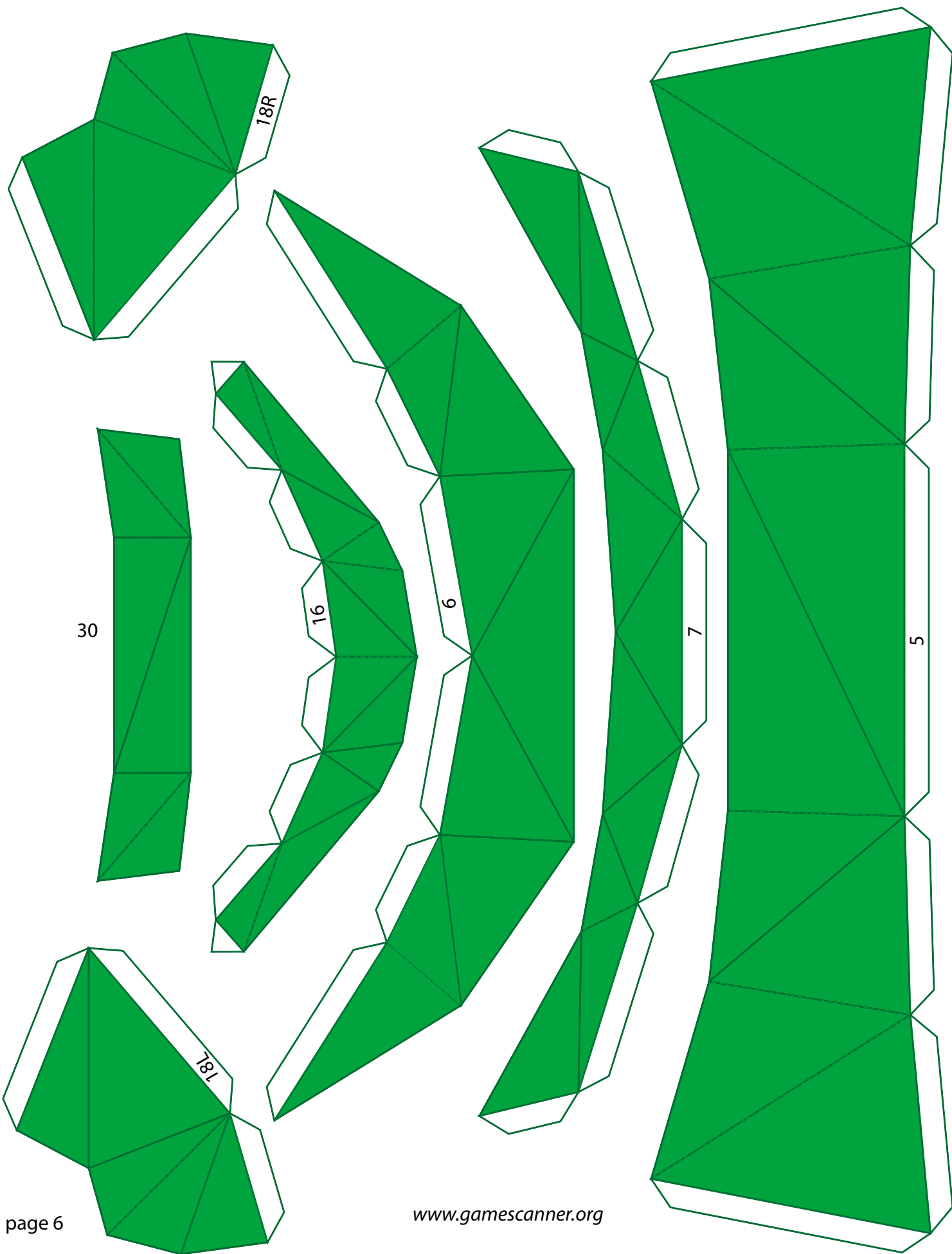


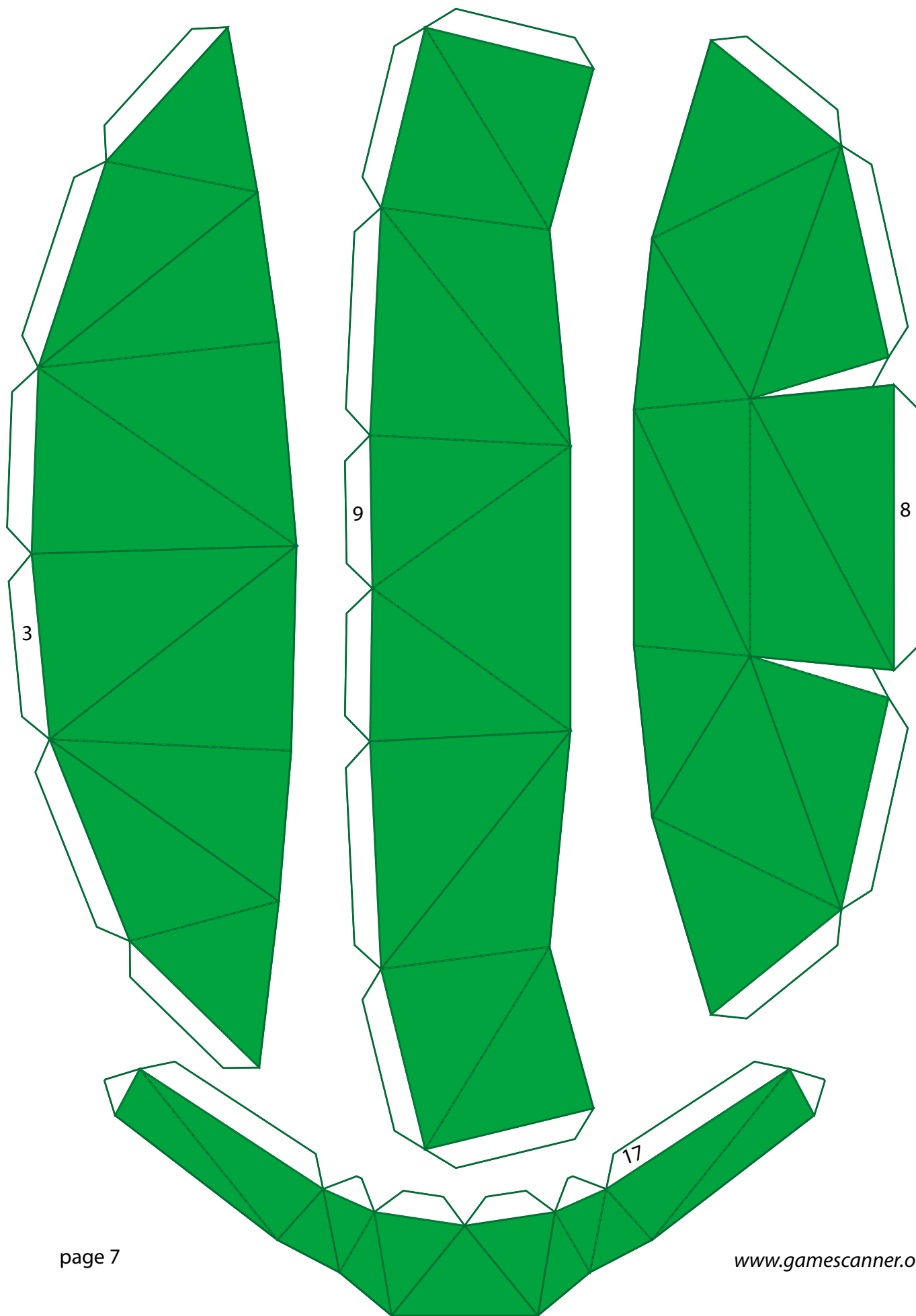


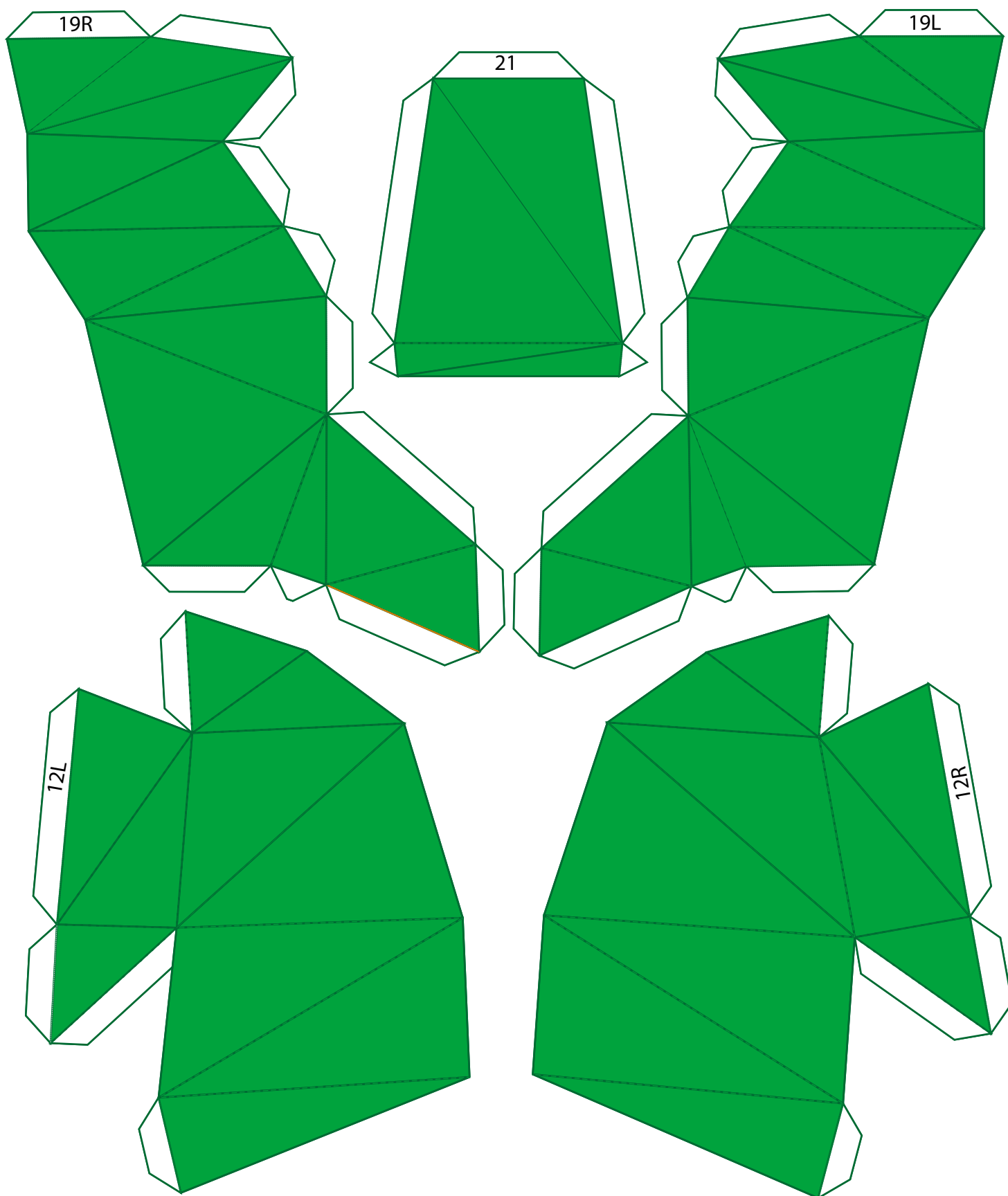


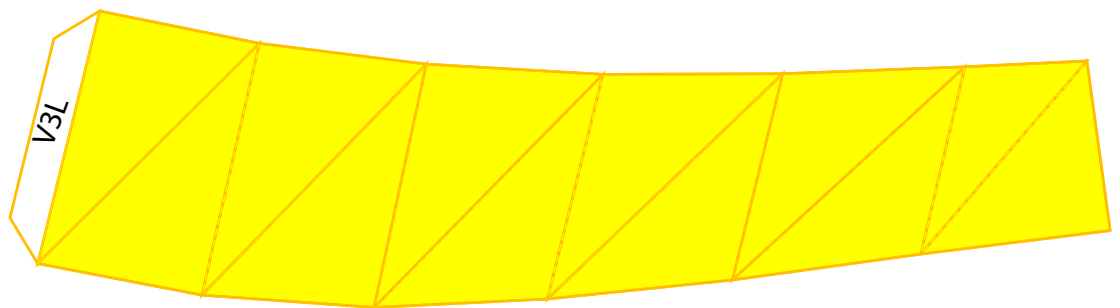
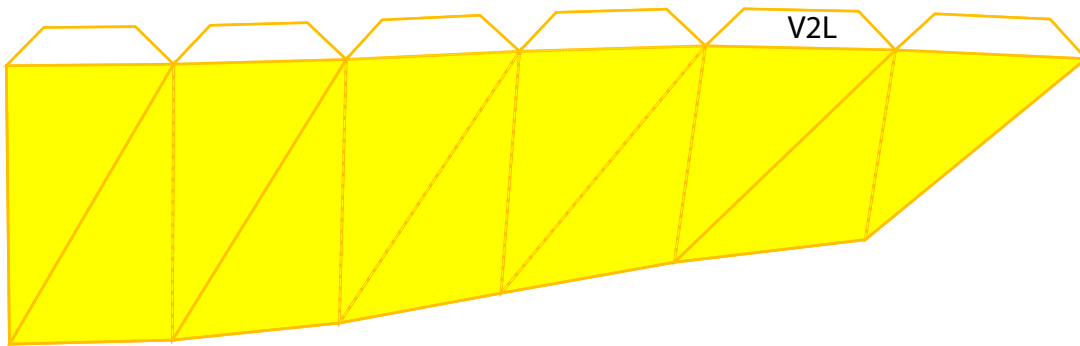
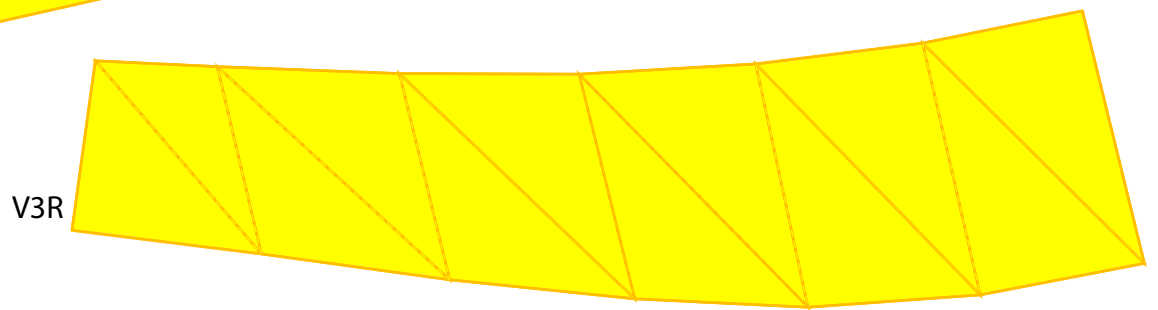
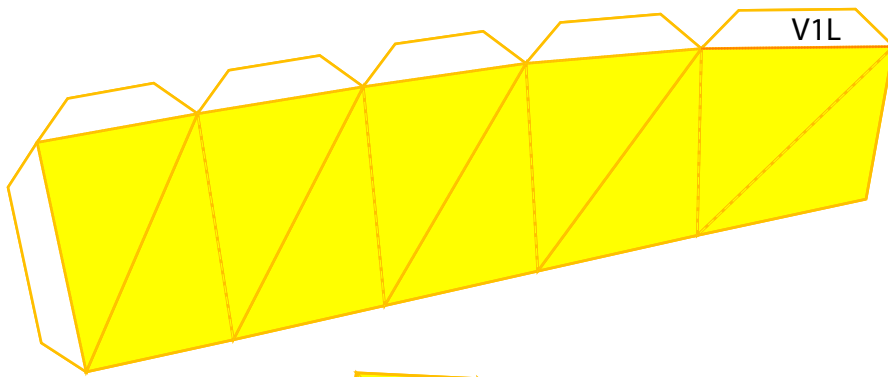
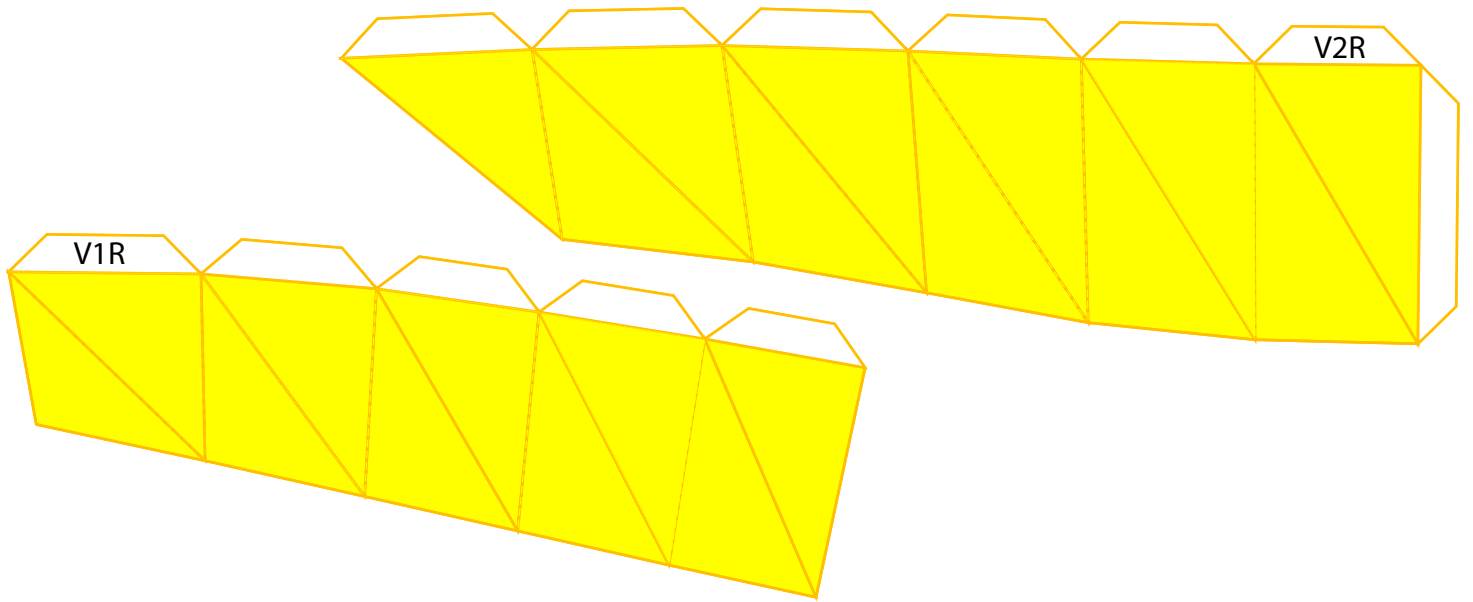












www.gamescanner.org